



## Luminus Releases Rugged Flip-Chip Mid-Power 3030

### *Industry Leading Lumens/Watt for High-Performance Outdoor Lighting and Harsh Environment Applications*

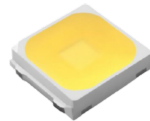
SUNNYVALE, Calif., June 7 2022, [Luminus Devices](#) announces the launch and immediate availability of the MP-3030-110F flip-chip LEDs that enable the development of lighting solutions with maximum efficacy, brightness, and overall ruggedness. The flip-chip design means no wire bond, creating higher reliability, as well as enhanced sulfur resistance for robust performance ideal not only in horticulture applications, but also in outdoor and harsh lighting environment applications. These LEDs provide low thermal resistance, come in a wide range of CCTs (2200K to 6500K) and CRIs (80, 90 & 95 minimum).

What makes the MP-3030-110F stand out from other 3030 LEDs? Yves Bertic, Senior Business Line Director at Luminus Devices, highlights, “Luminus’ MP-3030-110F provides state-of-the-art lumen and photosynthetic photon efficacies in an industry-standard 3030 package. Thanks to its flip-chip design, this LED delivers outstanding reliability with Q90 in excess of 50,000 hours, making it an excellent fit for traditional general lighting and horticulture applications”.

This product line is immediately available through [Luminus’ authorized distributors](#).

For a full list of features and applications visit [https://download.luminus.com/datasheets/Luminus\\_MP3030\\_110F\\_Datasheet.pdf](https://download.luminus.com/datasheets/Luminus_MP3030_110F_Datasheet.pdf).

#### **MP-3030-110F At-a-Glance**



- High lm/W
- High PPF/W
- CRI Options: 80, 90, 95 minimum
- Sulfur resistant
- Low thermal resistance
- RoHs and REACH compliant

#### **About Luminus Devices**

Luminus Devices develops and markets solid-state lighting solutions (SSL) to help its customers migrate from conventional lamp technologies to long-life and energy-efficient LED illumination. Combining technology originated from the Massachusetts Institute of Technology (MIT) with innovation from Silicon Valley, Luminus offers a comprehensive range of LED solutions for global lighting markets as well as high-output specialty lighting solutions for performance-driven markets including consumer displays, entertainment lighting and medical applications. Luminus is headquartered in Sunnyvale, California. For additional information please visit <http://www.luminus.com>.

**Contact:** Tom Jory

**E-mail:** [tjory@luminus.com](mailto:tjory@luminus.com)